

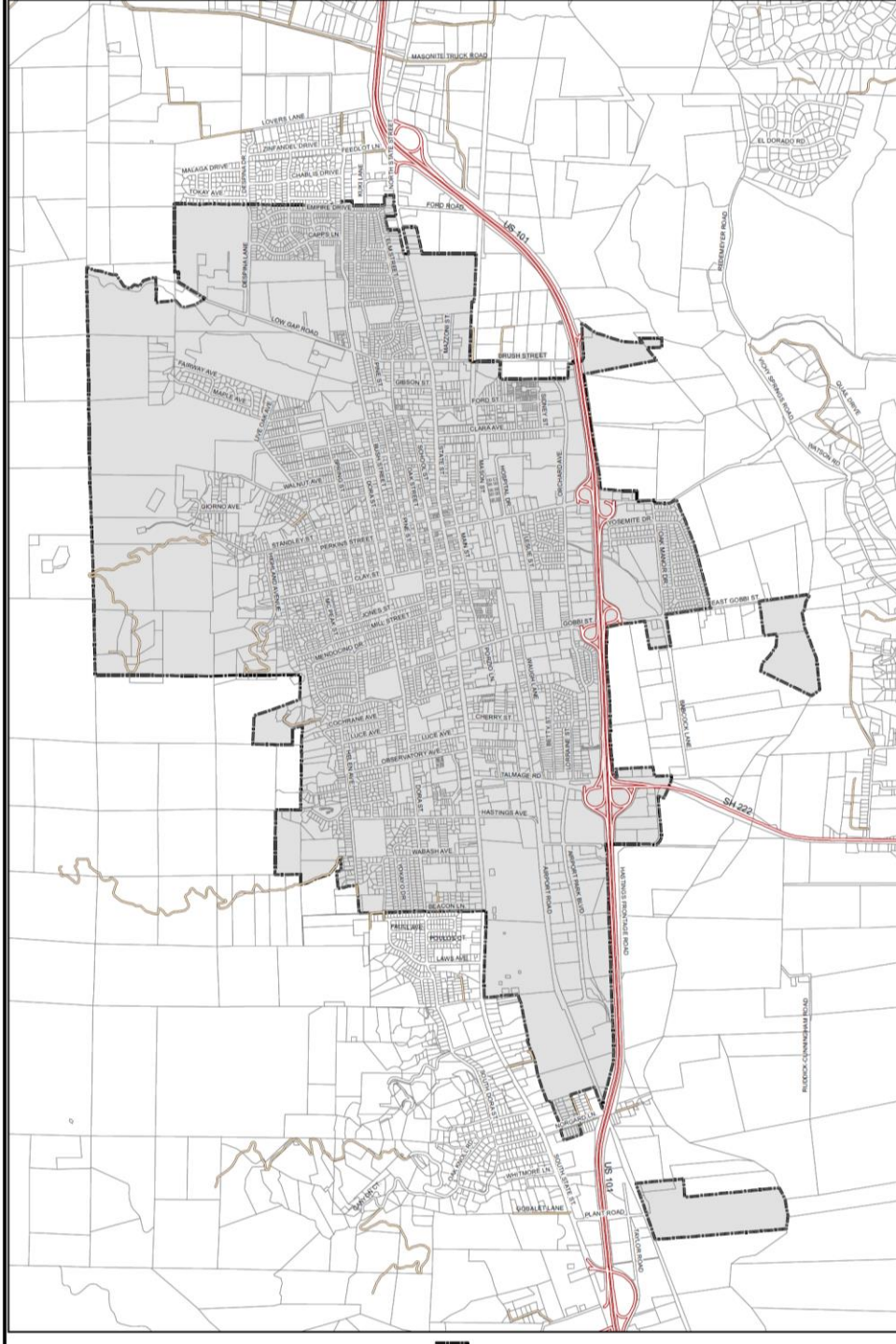


Item 6a: **Joint Workshop** for City of Ukiah and Ukiah Valley Sanitation District Draft Municipal Service Reviews

SEPTEMBER 12, 2022

Municipal Service Review (MSR)

- A MSR is a study of a local agency's governance and operations
- Provides an inventory and analysis of agency services: capacity, financial ability, accountability, and anticipated growth
- Second MSR for each agency: City (2012) and District (2014)
- Separate MSR documents prepared for each agency
- Holding joint workshop due to the interconnected provision of wastewater services in the Ukiah Valley

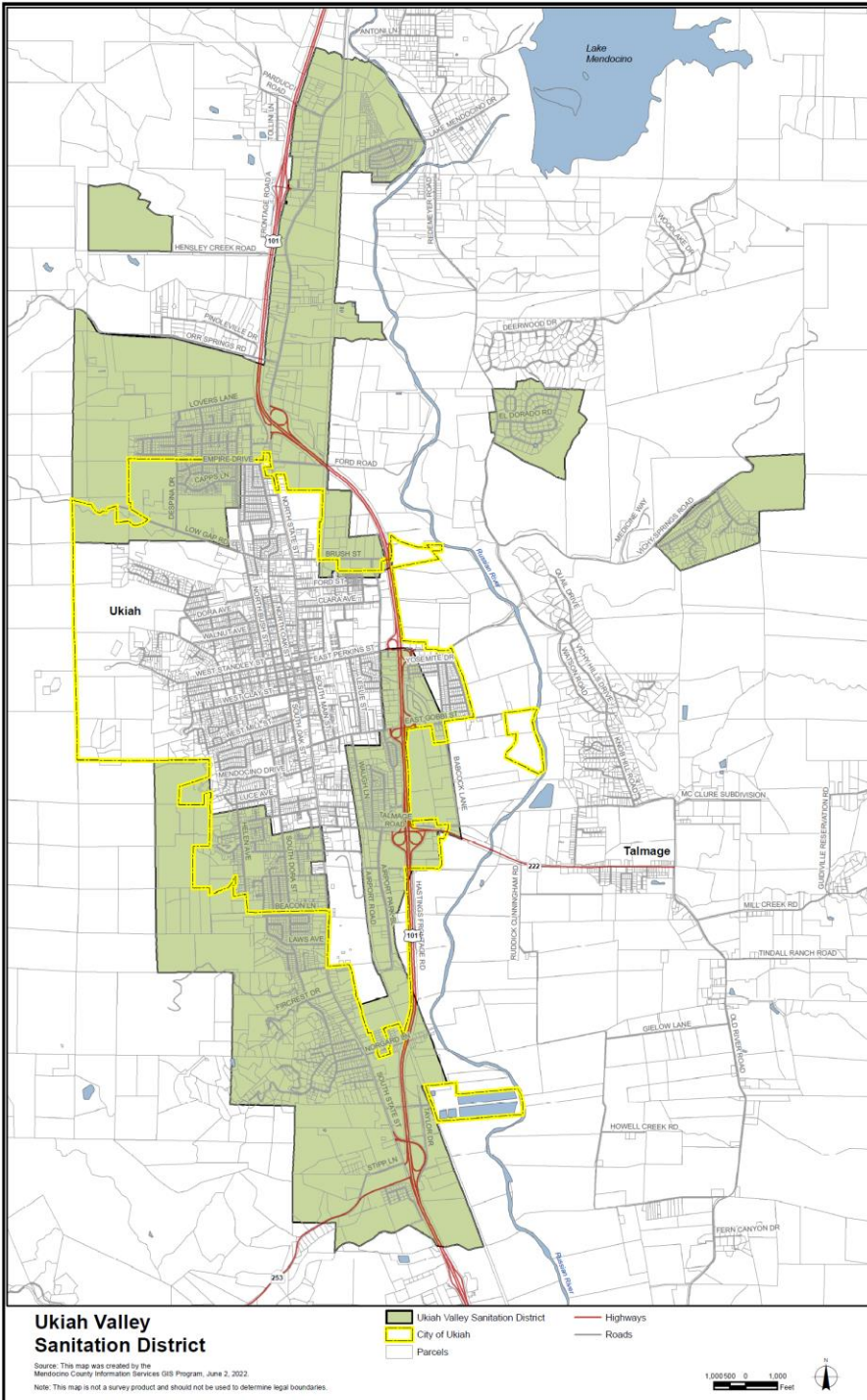


City of Ukiah

- Incorporated on March 8, 1876 as a General Law City
- City limits is 4.7-square miles in size
- Serves a resident population of roughly 16,000
- A full-service City that provides 12 municipal services:
Administration, Airport, Animal Control, Electric Utility, Fire and Emergency Medical Services, Law Enforcement, Community Services (Parks and Recreation), Public Works, Solid Waste, Stormwater, Wastewater, and Water

Ukiah Valley Sanitation District (UVSD)

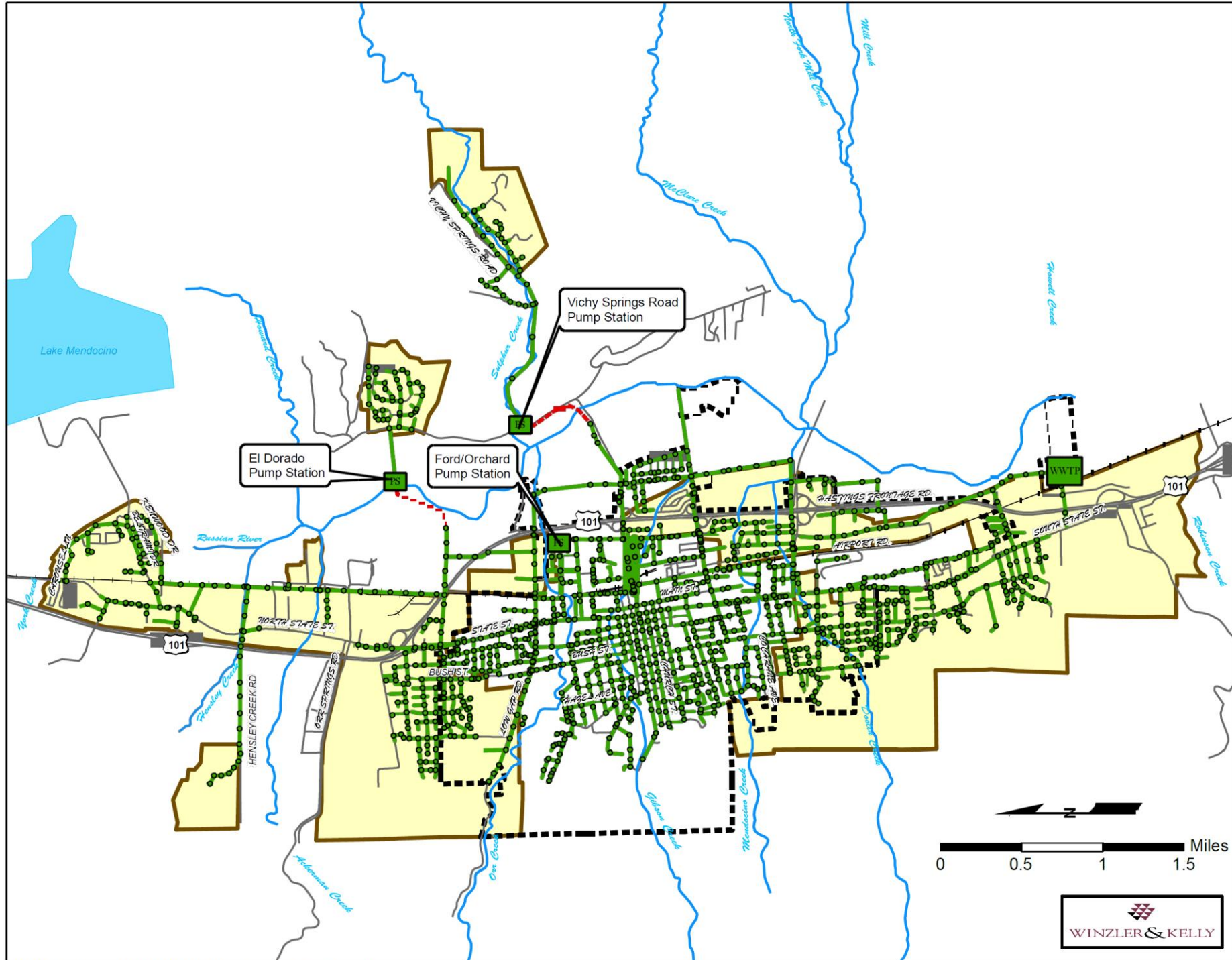
- Initially formed on July 6, 1954 as a County-dependent district
- Reformed on April 3, 2008 as an independent special district
- District boundary is 6.62-square miles in size and includes portions of the City limits and greater Ukiah Valley area
- Serves a resident population of roughly 9,400
- Single-Service Provider: sewer collection services





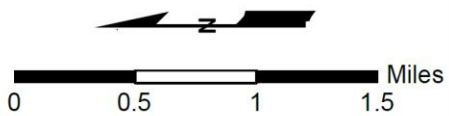
July 2009

© 2007 Google™



Legend

- Sanitary Sewer Manholes
- Sanitary Sewer Gravity Pipe
- Sanitary Sewer Force Main
- PS Sanitary Sewer Pump Stations
- WWTTP Sanitary Sewer Treatment Plant
- Streets
- Rivers and Streams
- Ukiah Valley Sanitation District
- Ukiah City Limits



**City of Ukiah
Ukiah Valley Sanitation District
Sewer System Overview**

Sewer System Management Plan
Mendocino County, California
02502-07-002
June 2009
Figure ES-2

Logos for the City of Ukiah and Mendocino County.

Summary of ESSUs by Agency

Area	UVSD	City of Ukiah	Totals
Current Usage (May 2022)	5,688	6,833	12,521
Percent of Total ESSUs	45.43%	54.57%	49.84%
New WWTP Agreement	65%	35%	100%
New WWTP Capacity	1,560	840	2,400
New WWTP ESSU's Used	618	406	1,024
New WWTP ESSU's Percent Used	39.63%	48.33%	42.68%
New WWTP ESSUs Remaining	942	434	1,376

Equivalent Sewer Service Units (ESSUs) are utilized as a measure of flow volume and treatment capacity; one ESSU is equivalent to a two-bedroom dwelling unit.

PROCESS

- Hold the joint workshop for the Commission to review, discuss, and request revisions on the Draft MSR and welcome public comment
- No formal action will be taken on the Draft MSR today
- A second workshop will be scheduled regarding the proposed Sphere of Influence (SOI) for these agencies
- A public hearing will be scheduled for formal consideration by the Commission of the Final MSR/SOI Updates for these agencies

Acknowledgements

City of Ukiah

Sage Sangiacomo, City Manager
Shannon Riley, Deputy City Manager
Craig Schlatter, Community Development Director
Jesse Davis, Chief Planning Manager
Daniel Buffalo, Finance Director
Sean White, Water and Sewer Director
Russ Ford, County Senior Planner/Cartographer

Ukiah Valley Sanitation District

Wing-See Fox, Interim District Manager (Urban Futures, Inc.)
Ernie Wipf, Board Chair
Mark DeMeulenaere, Contractor