
MENDOCINO **Local Agency Formation Commission**

Ukiah Valley Conference Center ♦ 200 South School Street ♦ Ukiah, California 95482

**CASPAR SOUTH WATER DISTRICT
SPHERE OF INFLUENCE UPDATE**

Prepared in accordance with Government Code §56425

Draft Workshop- August 3, 2015

Draft Hearing- September 14, 2015

October 5, 2015

November 2, 2015

Final Adoption- November 2, 2015

MENDOCINO LOCAL AGENCY FORMATION COMMISSION

LAFCo Resolution No. 15-16-05

A RESOLUTION OF THE LOCAL AGENCY FORMATION COMMISSION OF MENDOCINO COUNTY APPROVING THE CASPAR SOUTH WATER DISTRICT SPHERE OF INFLUENCE UPDATE 2015

WHEREAS, the Mendocino Local Agency Formation Commission, hereinafter referred to as the "Commission", is authorized to establish, amend, and update spheres of influence for local governmental agencies whose jurisdictions are within Mendocino County; and

WHEREAS, the Commission conducted an update for the Caspar South Water District's sphere of influence pursuant to California Government Code Section 56425; and

WHEREAS, the Executive Officer gave sufficient notice of a public hearing to be conducted by the Commission in the form and manner prescribed by law; and

WHEREAS, the Executive Officer's report and recommendations on the sphere of influence update were presented to the Commission in the manner provided by law; and

WHEREAS, the Commission heard and fully considered all the evidence presented at a public hearing held on the sphere of influence update on September 14, October 5, and November 2, 2015; and

WHEREAS, the Commission considered all the factors required under California Government Code Section 56425.

NOW, THEREFORE, the Mendocino Local Agency Formation Commission does hereby RESOLVE, DETERMINE, and ORDER as follows:

1. This sphere of influence update has been informed by the Commission's earlier municipal service review on countywide water and wastewater services, for which the section on the Caspar South Water District was accepted by the Commission on December 1, 2014.
2. The Commission, as Lead Agency, finds the update to the Caspar South Water District's sphere of influence is exempt from further review under the California Environmental Quality Act pursuant to California Code of Regulations Section 15061(b)(3). This finding is based on the Commission determining with certainty the update will have no possibility of significantly effecting the environment given no new land use or municipal service authority is granted.
3. The Caspar South Water District confirmed during the review of its sphere of influence that its services are currently limited to wastewater. Accordingly, the Commission waives the requirement for a statement of services prescribed under Government Code Section 56425(i).
4. This sphere of influence update is assigned the following distinctive short-term designation: "Caspar South Water District Sphere of Influence Update 2015"
5. Pursuant to Government Code Section 56425(e), the Commission makes the written statement of determinations included in the Caspar South Water District Sphere of Influence Update report, hereby incorporated by reference.

6. The Executive Officer shall revise the official records of the Commission to reflect this update of the Caspar South Water District's sphere of influence.

BE IT FURTHER RESOLVED that the Caspar South Water District's sphere of influence is updated as depicted in Exhibit "A".

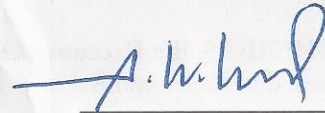
The foregoing Resolution was passed and duly adopted at a regular meeting of the Mendocino Local Agency Formation Commission held on this 2nd day of November, 2015, by the following vote:

AYES: McCowen, Hamburg, Hammerstrom, Madrigal, McNerlin, Silver, and Ward

NOES: None

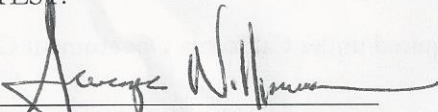
ABSTAIN: None

ABSENT: None



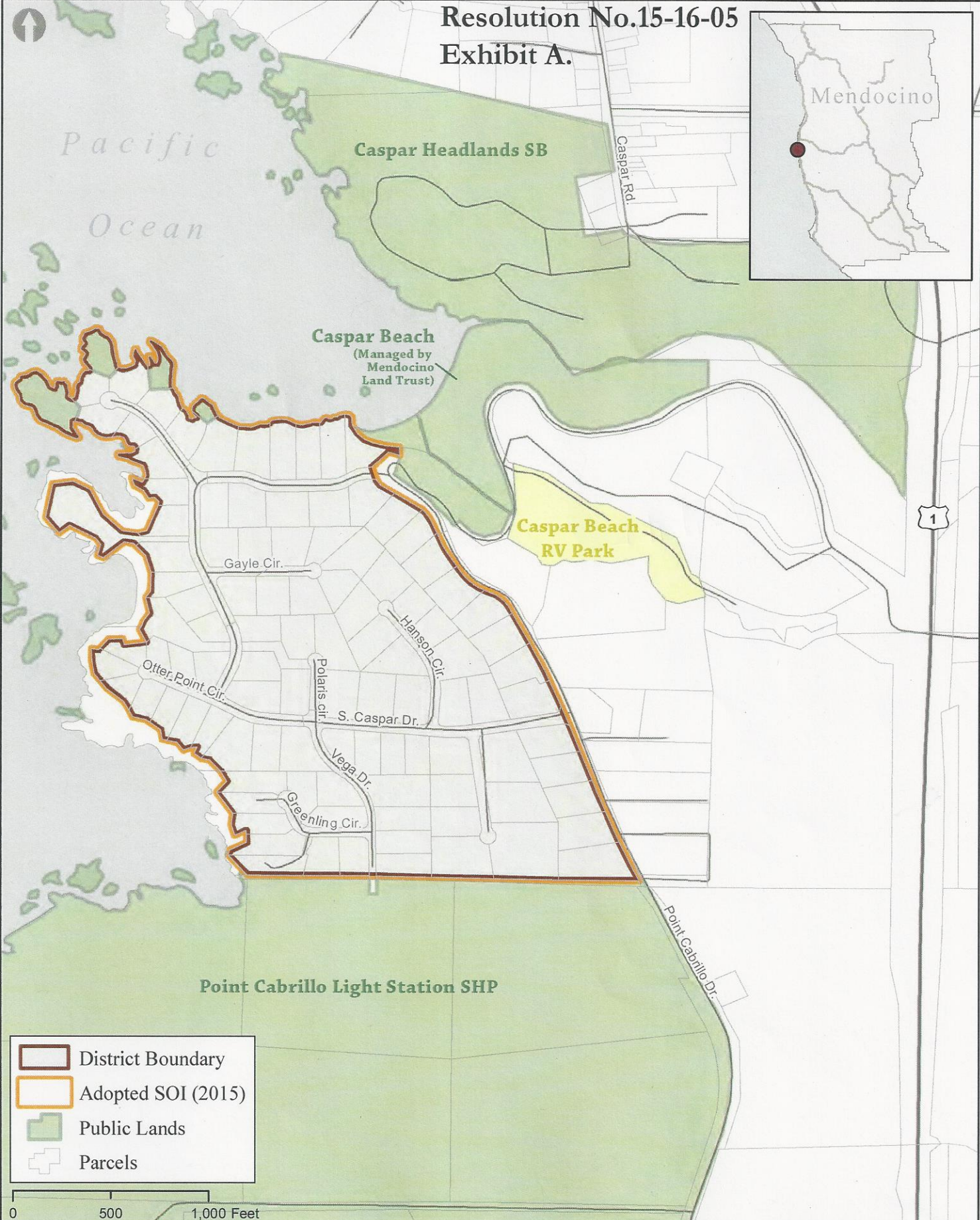
JERRY WARD, Chair

ATTEST:



GEORGE WILLIAMSON, Executive Officer

Resolution No.15-16-05 Exhibit A.



- District Boundary
- Adopted SOI (2015)
- Public Lands
- Parcels

0 500 1,000 Feet

Caspar South Water District

Prepared for
Mendocino
LAFCo by: **PLANWEST PARTNERS, INC.**
Date: 11/20/2015

Sources: Boundaries: Mendocino County, Roads: US Census TIGER
Path: D:\Planwest_GIS\projects\current\Mendocino_LAFCo\Water_Districts\mapdocs\Caspar_South_Water_District.mxd

Table of Contents

INTRODUCTION	3
OVERVIEW	3
REVIEW PERIOD	3
EVALUATION CONSIDERATIONS	3
General Guidelines for Determining Spheres of Influence	4
FIGURE 1	5
OVERVIEW	6
CURRENT AGENCY OPERATIONS	6
BACKGROUND	6
MUNICIPAL SERVICE REVIEW	7
SPHERE OF INFLUENCE	7
DISADVANTAGED UNINCORPORATED COMMUNITIES	7
CURRENT AND PROJECTED POPULATION	7
Population and Growth	7
Projected Growth and Development	8
CAPACITY AND SERVICE	8
Capacity	8
Service	9
Finances and Infrastructure	9
Relevant Local Agencies and Communities of Interest	10
RELEVANT PLANNING AND SERVICE FACTORS	10
County of Mendocino General Plan- Development Element (DE)	10
DISCUSSION	11
ANALYSIS	11
Present and Planned Land Use	11
Present and Probable Need for Public Facilities and Services	11
Present Capacity of Facilities and Adequacy of Public Services	12
Social and Economic Communities of Interest	12
Present and Probable Need for Water, Sewer, or Fire Protection Services for Disadvantaged Unincorporated Communities (DUCs)	12
RECOMMENDATIONS	12
REFERENCES	12

INTRODUCTION

OVERVIEW

This update is prepared in accordance with the Cortese-Knox-Hertzberg Local Government Reorganization Act (CKH Act) which states, “In order to carry out its purposes and responsibilities for planning and shaping the logical and orderly development and coordination of local government agencies so as to advantageously provide for the present and future needs of the county and its communities, LAFCo shall develop and determine the Sphere of Influence (SOI) of each local governmental agency within the county” (GC §56425). A “SOI” is defined under the CKH Act as “.... a plan for the probable physical boundaries and service area of a local (government) agency” (GC §56076).

Decisions on organizational changes must be consistent with the SOI boundary and determinations. The adopted SOI is used by LAFCo as a policy guide in its consideration of boundary change proposals affecting each city and special district in Mendocino County. Other agencies and individuals use adopted SOIs to better understand the services provided by each local agency and the geographic area in which those services will be available. Clear public understanding of the planned geographic availability of urban services is crucial to the preservation of agricultural land and discouraging urban sprawl.

The following update will assess and recommend establishment of an appropriate Caspar South Water District (Caspar South WD, CSWD, or District) Sphere of Influence (SOI). The objective is to establish CSWD’s SOI relative to current legislative directives, local policies, and agency preferences in justifying whether to (a) change or (b) maintain the designation. The update draws on information from the CSWD’s Municipal Services Review (MSR), which includes the evaluation of availability, adequacy, and capacity of services provided by the District.

REVIEW PERIOD

SOI reviews and updates typically occur every five years, or as needed. A local agency’s services are analyzed with a twenty year planning horizon, and a sphere is determined in a manner emphasizing a probable need for services within the next 5-10 years. Actual boundary change approvals, however, are subject to separate analysis with particular emphasis on determining whether the timing of the proposed action is appropriate.

EVALUATION CONSIDERATIONS

When updating the SOI, the Commission considers and adopts written determinations:

Sphere Determinations: Mandatory Written Statements

1. Present and planned land uses in the area, including agricultural and open space.
 2. Present and probable need for public facilities and services in the area.
 3. Present capacity of public facilities and adequacy of public services the agency provides or is authorized to provide.
 4. Existence of any social or economic communities of interest in the area if the commission determines they are relevant to the agency.
 5. If the city or district provides water, sewer, or fire, the present and probable need for those services of any disadvantaged unincorporated communities within the existing sphere.
-

Policies specific to Mendocino LAFCo are also considered along with determinations in administering the CKH Act in Mendocino County. This includes considering the merits of the SOI, or any changes, relative to the Commission's seven interrelated policies, as listed below, with respect to determining the appropriate SOI.

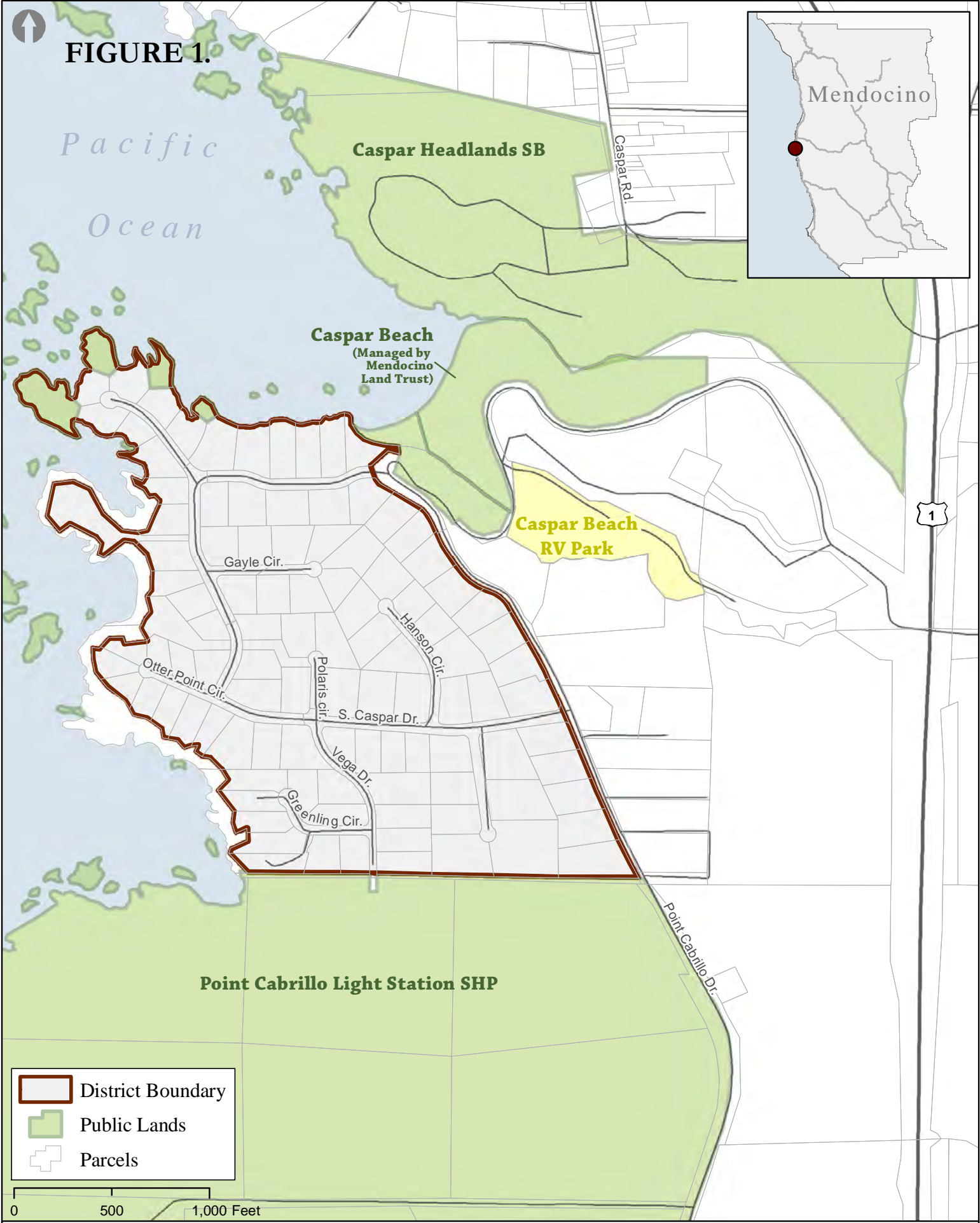
General Guidelines for Determining Spheres of Influence

The following is excerpted from *Mendocino LAFCo's 2004 Policies and Procedures*, "Chapter 5: Policies That May Apply for Some Applicants":

1. Territory that is currently receiving services from a local agency shall be considered for inclusion within that agency's sphere. Territory that is projected to need services within the next 5-10 years may be considered for inclusion within an agency's sphere, depending on a number of factors required to be reviewed by LAFCO. Additional territory may be considered for inclusion if information is available that will enable the Commission to make determinations as required by Section 56425.
2. Territory will not be considered for inclusion within a city's sphere of influence unless the area is included within the city's general plan land use or annexation element.
3. A special district that provides services, which ultimately will be provided by another agency (e.g. mergers, consolidations) will be assigned a zero sphere.
4. When more than one agency can serve an area, agency service capabilities, costs for providing services, input from the affected community, and LAFCO's policies will be factors in determining a sphere boundary.
5. If additional information is necessary to determine a sphere boundary a partial sphere may be approved and a special study area may be designated.
6. A local agency may be assigned a coterminous sphere with its existing boundaries if:
 - There is no anticipated need for the agency's services outside its existing boundaries.
 - There is insufficient information to support inclusion of areas outside the agency's boundaries in a sphere of influence.
 - The agency does not have the service capacity, access to resources (e.g. water rights) or financial ability to serve an area outside its boundaries.
 - The agency's boundaries are contiguous with the boundaries of other agencies providing similar services.
 - The agency's boundaries are contiguous with the sphere of influence boundaries previously assigned to another agency providing similar services.
 - The agency requests that their sphere of influence be coterminous with their boundaries.
7. If territory within the proposed sphere boundary of a local agency does not need all of the services of the agency, a service specific sphere of influence may be designated.



FIGURE 1.



	District Boundary
	Public Lands
	Parcels

Caspar South Water District

Prepared for **PLANWEST PARTNERS, INC.**
 Mendocino
 LAFCo by: Date: 10/26/2015

Sources: Boundaries: Mendocino County; Roads: US Census TIGER.
 Path: D:\Planwest_GIS\projects\current\Mendocino_LAFCo\Water_Districts\mapdocs\Caspar_South_Water_District.mxd

FIGURE 1.

OVERVIEW

CURRENT AGENCY OPERATIONS

The CSWD is a small independent district that administers a community sewage disposal system to Caspar South Subdivision and provides four wastewater related services:

- wastewater collection;
- wastewater processing through a dosing chamber;
- wastewater disposal through a leach field system; and
- maintenance of related facilities and equipment.

The District's facility is a sewage collection system that was installed in the early 1960's; a leach field was later installed in 1982. The District contracts with a septic service company to dispose of wastewater solids.

The District is located south of the unincorporated community of Caspar within the County of Mendocino. Caspar is located along State Highway 1 between the City of Fort Bragg and the Village of Mendocino (See Figure 1).

BACKGROUND

Mendocino County Board of Supervisors adopted Resolution No. 78-501 to order the formation of Caspar South Water District on December 19, 1978, under the California Water Code §34000-38501, for the purpose of providing wastewater treatment and disposal to the Caspar South Residential Subdivision. Since the original establishment in 1978, there have been no other changes to the District boundary (MSR 2014).

The original centralized sewage system for the Caspar South Subdivision was constructed in 1965 and initially discharged effluent into a cave which led directly to the Pacific Ocean. This method of effluent discharge does not comply with modern water quality regulations and led to a cease and desist order in 1979 by the North Coast Regional Water Quality Control Board. When the CSWD was formally organized in 1978, it acquired the centralized sewage system (MSR 2014).

The District encompasses approximately 105 acres. There are 107 lots within the Caspar South Subdivision: one serves as a community leach field, five are open space parcels, and 101 are residential lots. The District provides wastewater service to 75 residential lots, 66 lots have residential dwellings and nine are vacant. There are 26 lots within the subdivision that are not provided with wastewater service because they are located within below-grade locations and cannot access the system (MSR 2014).

On May 2, 2006, the State Water Resources Control Board issued a general order to all districts to bring their systems into compliance with permissible average daily flow allowances. CSWD did exceed flow allowances during the wettest winter months up to the year 2006. At that time, the District actively pursued repairs to the wastewater infrastructure to remedy this situation (MSR 2014).

In 1982, the District obtained a permit from the California Coastal Commission to construct a pumping station and install one large community leach field to service the existing Caspar South Subdivision. At that time, the treatment plant located at the end of Otter Point Circle was

decommissioned, and subsequently served as a sewage collection tank. Permits were also obtained from the Mendocino County Department of Environmental Health and the North Coast Regional Water Quality Control Board. This project was completed in a timely manner (MSR 2014).

MUNICIPAL SERVICE REVIEW

In 2014 a County-wide MSR was conducted for the county water districts, which included the Caspar South Water District. A Municipal Service Review is a part of and a prerequisite for a SOI Update; as such, much of the information contained herein comes directly from the 2014 CSWD MSR. Caspar South CWD's MSR was adopted by the Commission at the December 1, 2014 meeting with the condition that the MSR shall be reviewed by LAFCo 12 months after adoption. The review will primarily evaluate the District's operation and compliance with regulatory requirements, in particular evidence of process initiation of a Capital Improvement Plan and a Sanitary Sewer Management Plan. LAFCo is expected to conduct a review in December 2015, but the outcome of that review is not expected to have an impact on the SOI designation for CSWD.

SPHERE OF INFLUENCE

The CSWD SOI was established by LAFCo via Resolution No. 94-4 dated August 1, 1994. LAFCo's approval of the SOI included Master Service Element approval and Negative Declaration per CEQA. LAFCo's Resolution No. 94-4 approved SOIs for a large number of Districts, and due to the practice of approving SOIs for a large group of districts at once, specific details about CSWD's SOI are not readily apparent in LAFCo files. In the 2014 MSR the District indicated that they believed that their Sphere of Influence is co-terminus with their existing boundary and there is no information in LAFCo files to indicate otherwise. Since the SOI was approved in 1994, there have been no changes (MSR 2014).

DISADVANTAGED UNINCORPORATED COMMUNITIES

LAFCo is required to evaluate disadvantaged unincorporated communities (DUCs) as part of this SOI review, including the location and characteristics of any such communities. A DUC is defined as any area with 12 or more registered voters where the median household income (MHI) is less than 80 percent of the statewide MHI. Within a DUC, three basic services are evaluated: water supply, sewage disposal, and structural fire protection. The CSWD provides one of these services—wastewater, and is not responsible for the other two basic services. Fire protection is provided by the Mendocino Fire Protection District. Domestic water service is provided by the Caspar South Service Company.

Caspar South Water District is a portion of the community of Caspar, which is a Census Designated Place (CDP). The Caspar CDP MHI is \$72,885 (118.3%), greater than 80% of the State MHI of \$61,632, and therefore does not qualify as a DUC (MSR 2014).

CURRENT AND PROJECTED POPULATION

Population and Growth

Caspar is a census-designated place (CDP) in Mendocino County, and the CSWD is located within this CDP, but serves only a portion of the community (Figure 1). At the time of the 2000 Census, the population was 317 people in a total of 145 households. Ten years later, the population in the CDP had grown to 509 (MSR 2014).

Many developed lots have seasonally occupied (i.e. second) homes. The District estimates that approximately one-third of the total occupancy is full-time residents. During the low season, assuming that 25 customer parcels are occupied and assuming the County's average of 2.46 people per household, then the District serves 62 people. Under the persons per household and assuming all homes are occupied, the District serves approximately 185 people during the high season (MSR 2014).

Projected Growth and Development

Future growth and development of Caspar and the District is subject to Mendocino County land use regulations. The County has adopted several plans and policies to regulate this growth including a General Plan and a zoning ordinance. The County's zoning ordinance contains three major geographical parts and the Caspar area is included in Coastal Zoning Code. The County's General Plan and Zoning Ordinance designate most of the Caspar area as single family residential, as is Caspar South (MSR 2014).

Given the constrained capacity of the wastewater processing facilities in the District, nine additional homes could be served by the District, if there were major improvements to the facilities. Improvements would likely include securing additional land to increase the leach field disposal area, and construction of additional leach lines. The District is responsible for approving all connections. It is theoretically possible that the County planning/building services could allow new homes to be constructed within the District boundary or SOI and be served by a private individual septic tank, rather than through the District; however, obtaining necessary permits from the Regional Water Quality Control Board and other agencies would be a challenge to this approach. Given these constraints, it is not likely that the population within the District's boundary/SOI will grow significantly, or that the District will see an increased demand for wastewater services over the next 20 years (MSR 2014).

Within the District boundary, there are nine vacant lots out of 101 total lots. If these lots are developed, the population of the District could, assuming the County's average of 2.46 people per household, increase by approximately 18 persons, for a total population of 248 persons (MSR 2014).

CAPACITY AND SERVICE

Capacity

The District provides wastewater services to the Caspar South Subdivision. No other services are provided and there is no wastewater service provided beyond subdivision boundaries. The wastewater system was constructed in the early 1960's when the subdivision was developed. Of the 101 lots the District serves, 26 have individual septic systems; the remaining 75 lots receive wastewater services, 66 of those are developed and 9 are vacant. Maximum District service is limited to development of the 9 additional residences. As of 2014, two homes were under construction on two of the vacant parcels (MSR 2014).

As of 2006, the CSWD treatment capacity was 13,200 gallons per day, which has since been updated to 16,000 gallons per day. In the past, the District experienced flows in excess of the permitted discharge of 13,200 gallons per day, which occurred routinely during wet weather from 2000 to 2008. There have been no reported flow violations since 2006, perhaps due to lower than average seasonal rainfall (MSR 2014). Today, the CSWD's treatment facility has a design capacity to process wastewater from 75 parcels, or approximately 16,000 gallons per day. The wastewater treatment

facility's capacity is designed to accommodate nine additional residential dwellings on the vacant parcels within the subdivision.

Wastewater service capacity is limited by the wastewater treatment facility design capacity. The District processes an average of 4,000 gallons per day during dry weather flow conditions and 8,000 gallons per day during peak (wet weather) flow conditions. This is the maximum capacity for the system, as effluent must be retained in the system for 24-hours. The District reported that the sewage processing system is in good condition, and is operating properly now that effluent is discharged on a rotating basis to the leach field from eight discharge pipes. The wastewater treatment facility has not recently exceeded treatment capacity (MSR 2014).

The District does not have plans to increase the wastewater system capacity, although the District is considering purchasing easements on property adjacent to the existing community leach field parcel. Should additional capacity become necessary, the District would add an additional 8,000 to 10,000 gallon dosing chamber and additional leach lines to the system (MSR 2014).

Service

The CSWD works to ensure the integrity of its system via testing and other measures including: continual maintenance and monitoring, video camera inspection of lines, and locating and eliminating 'wet areas' where leaks are present. The District installed filters at the pump stations, added fans, and added stainless steel 'cat walks' to insure that the pump stations operate properly. Through a series of 'mini-projects' (average cost of \$15,000), the District is replacing older lines, most recently replacing a 300-foot section of pipe in the southern portion of the District. Most recently, the District reports that it is in the process of replacing 900 linear feet of 6 inch pipe in the system, with work commencing in September of 2015 (District President, September 30, 2015). The District is addressing the issue of private piped rooftop and storm water drainages flowing into the wastewater collection system. The system is designed for wastewater only, so stormwater runoff has the potential to exceed the system's capacity. The District is working to identify and eliminate storm water intrusion, and has taken steps to have stormwater drainage disconnected from the wastewater system. The District has also installed backflow prevention devices in each residential lateral, and has added two generators at each pump station in case of a power outage (MSR 2014).

The provision of wastewater treatment and disposal services to the customers in the District appears to be sufficient. There have been no major service outages reported. The District works to overcome significant challenges including geographic isolation, small size, and the need for volunteers. Based on information within the MSR provided by the District regarding facilities, management practice, accountability, and financing, CSWD's wastewater treatment and disposal capacity is sized and designed appropriately to serve up to 75 residences.

Finances and Infrastructure

Revenues have exceeded expenditures over the past three fiscal years and net income is an estimated \$106,000 in reserves. The District does not have any bonded indebtedness. The District works to ensure the integrity of its system via testing and other measures including continual maintenance and monitoring. It is also working to identify storm water intrusion sources. Toward this end, the District retained an engineering firm, Winzler and Kelly, to conduct a preliminary engineering report of the current system, including the leach field. Through a series of small projects (average cost \$15,000), the District has been working toward eliminating the intrusion problem (MSR 2014). The

District has noted that based of the hydro-flush and camera inspection of the entire system on 5/14/15 they have prioritized repairs/replacements and are in the process of performing these. Additional work will continue into 2016 (District President, October, 2015).

Relevant Local Agencies and Communities of Interest

The CSWD is located along the Mendocino Coast, in the southern portion of the community of Caspar. To the north and south of the CSWD boundary are California State Parks, and to the west is the Pacific Ocean. Much of the community of northern Caspar outside of District boundaries has been historically owned and operated by the Caspar Cattle Company (CCC). There are 2 developed water systems in place that currently serve the Caspar Cattle Company lands. These water systems are privately owned and their status and exact service locations are unknown. Directly to the east of Caspar South WD, is the Caspar Beach RV Park. The RV Park has its own water system (SDWIS 2015). No specific areas outside the District boundary have been identified that require services from the District.

The CSWD does not share services or facilities with other Districts. Fire protection for properties within Caspar South WD is provided by the Mendocino Fire District. Water service within the CSWD is provided by the Caspar South Service Company, whose boundary is approximately the same as the CSWD boundary. The CSWD explored options to merge with the Caspar South Service Company however it was unfeasible because the Caspar South Service Company is a private corporation (MSR 2014).

RELEVANT PLANNING AND SERVICE FACTORS

Local planning policies and land-use designations inform LAFCo SOI decisions. Below are relevant policies and service factors that are used as a guide.

County of Mendocino General Plan- Development Element (DE)

General Plan Water Supply and Sewer (Wastewater Treatment) Services Policies:

Policy DE-186: Coordinate community water and sewer services with General Plan land use densities and intensities.

Policy DE-187: The County supports efficient and adequate public water and sewer services through combined service agencies, shared facilities, or other inter-agency agreements.

Action Item DE-187.1: Work aggressively with water and sewer service providers to overcome current and projected system and supply deficiencies necessary to serve planned community growth.

Action Item DE-187.2: Support funding applications to improve and expand water and sewer service capabilities in areas planned for future growth or to resolve existing deficiencies.

Action Item DE-187.3: Work with communities and public water and sewer service entities to monitor, manage and/or maintain community-wide or decentralized water/sewer systems.

Policy DE-188: Encourage water and sewer service providers to incorporate water conservation, reclamation, and reuse.

- Encourage the development and use of innovative systems and technologies that promote water conservation, reclamation, and reuse.

- Encourage the development of systems that capture and use methane emissions from their operation.
- Encourage the development and use of innovative systems and technologies for the treatment of wastewater.

Policy DE-189: Oppose extension of water or sewer services to rural non-community areas when such extensions are inconsistent with land use and resource objectives of the General Plan, except where the extension is needed to address a clear public health hazard.

Policy DE-190: Development of residential, commercial, or industrial uses shall be supported by water supply and wastewater treatment systems adequate to serve the long-term needs of the intended density, intensity, and use.

Policy DE-191: Land use plans and development shall minimize impacts to the quality or quantity of drinking water supplies.

DISCUSSION

The District faces significant service delivery challenges, including geographical isolation, small size, and need for volunteers and board members. Based on information within the MSR, the provision of wastewater treatment and disposal services to the customers located in the District's boundaries appears to be sufficient; however maintaining the small system is an ongoing challenge.

The CSWD serves the Caspar South Subdivision is 91% built-out, and contains 101 residential parcels within the District boundary. The District provides wastewater services to 75 of the lots (66 lots developed, 9 vacant); 26 lots use individual septic systems. Wastewater system capacity is sufficient to accommodate full build-out of the subdivision (101 residential lots, 75 lots served). No out-of-district services are provided, nor have any services outside the District boundary been requested. The District has no plans to expand its boundary or SOI (District President, September 30, 2015). It is not likely that the population within the District's boundaries/SOI will grow significantly, or that the District will see an increased demand for wastewater services beyond the current design capacity of the system. Given the minimal expected growth, a coterminous SOI appears to be sufficient to meet the needs of the District.

ANALYSIS

As presented in the introduction, when updating the SOI, the Commission considers and adopts written determinations. The following are the formal determinations for this SOI Update:

Present and Planned Land Use

Given Caspar South WD's isolated location and limited development potential, it's unlikely to experience significant population or demand increases for wastewater service within District boundaries.

Present and Probable Need for Public Facilities and Services

The District is mostly built-out and provision of services beyond District boundaries is not readily feasible because of the physical limitations of the surrounding area. No out-of-district services are provided, nor have any services outside the District boundary been requested.

Present Capacity of Facilities and Adequacy of Public Services

The provision of wastewater treatment and disposal services to the customers located in District boundaries is sufficient. It is not likely that the District will see an increased demand for wastewater services beyond the current design capacity of the system.

Social and Economic Communities of Interest

The current sphere of influence meets the community needs.

Present and Probable Need for Water, Sewer, or Fire Protection Services for Disadvantaged Unincorporated Communities (DUCs)

The community of Caspar does not qualify as a DUC. There are no DUCs that have been identified within the vicinity of Caspar WD that should be considered for service by the District.

RECOMMENDATIONS

The CSWD does not provide services outside the District; services provided are near capacity, but due to geography and land ownership patterns related constraints, the District is not looking to expand. Service efficiency, shared facility, and community of interest opportunities are unlikely due to the rural nature of the District. There are no disadvantaged unincorporated communities within the District. Based on this information, a coterminous SOI is sufficient for the District.

REFERENCES

- Mendocino County General Plan: Coastal Element. Chapter 4- Land Use Plan: Descriptions and Policies for Thirteen Planning Areas: 4.9 Dark Gulch to Navarro River Planning Area. Albion Planning Area. Adopted by Mendocino County Board of Supervisors. November 5, 1985 (Revised -- March 28, 1988, February 13, 1989, January 22, 1990, July 9, 1990, March 11, 1991).
- Mendocino LAFCo, 2004 Policies and Procedures, Chapter 5- Policies That May Apply for Some Applicants, D. Sphere of Influence.
- (MSR, 2014). "Mendocino Local Agency Formation Commission, Final Water and Wastewater Municipal Service Review: Caspar South Water District, Elk County Water District, Gualala Community Services District, Irish Beach Water District, Laytonville County Water District, Pacific Reefs Water District, Round Valley County Water District, Westport County Water District. October 2014." Prepared by: Kateri Harrison, SWALE, Inc.; Uma Hinman, Uma Hinman Consulting. Final approval October 6, 2014.
- Safe Drinking Water Information System (2015). California State Water Resources Control Board. https://sdwis.waterboards.ca.gov/PDWW/JSP/WaterSystemDetail.jsp?tinwsys_is_number=2934&tinwsys_st_code=CA&wsnumber=CA2300736